



Welcome to Bassaleg School

Transition Visits June 2021

**CREDU A PHERTHYN • BELIEVING &
BELONGING**

Hello Year 6 Pupils!



This slideshow is a copy of the one that Mr Ford and Miss Williams went through with you, when visiting you in your primary schools in June. If you missed this visit, we hope this slideshow will help you to start getting prepared for starting life at Bassaleg School in September!

Who Are We?



**Mr Ford - Director of
Wellbeing/Head of Year 7**



**Miss Williams - Deputy Director of
Wellbeing/Head of Year 7**

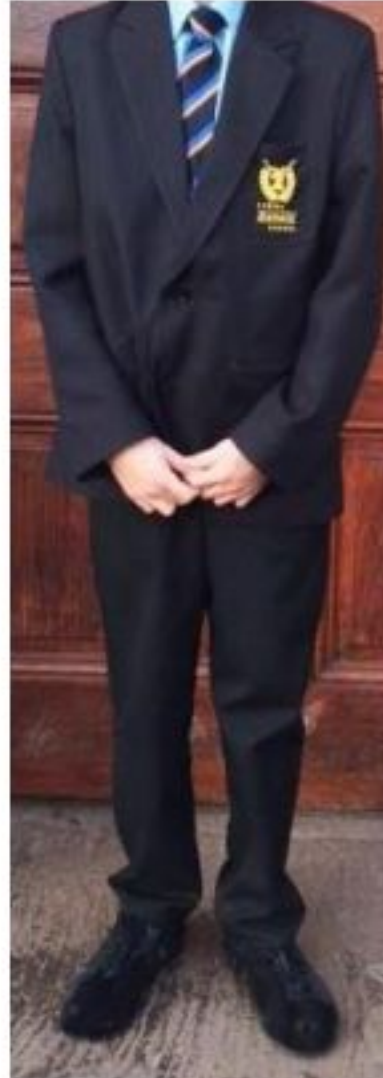
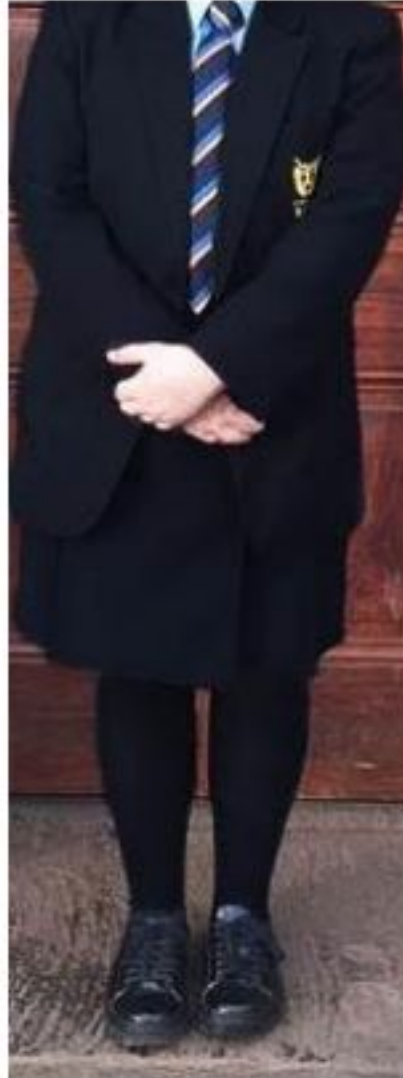


Our Core Values at Bassaleg



- Be **honest**, be **kind**, be **true to yourselves**.
- Be **respectful** of others and celebrate diversity.
- Be **positive** about what you can achieve now and think big for the future!
- Be **resilient** in the midst of challenge.
- Be **curious** and **confident** in your questioning about the world in which we live.
- Be **active** and **proud** members of your community.
- Look after yourself and look after each other.

Bassaleg School Uniform



Years 7 – 11

Black Pleated Skirt *or*

Black Tailored Trousers

Black Tailored Shorts

Black Tailored Blazer with School Badge

School Tie (Clip On)

Pale Blue Long Sleeve Shirt*

Optional Black V-Neck Pullover with Crest but not instead of a blazer

Black Socks or Tights

All black sensible footwear

Navy, black or dark grey outdoor coat

First Day at Bassaleg

- Your first day at Bassaleg will be Monday 6th September.
- On your first day, and every day after, you will need to arrive in school by 8:30am.
- On your first day, you will meet on the Astroturf, where you will meet with Mr Ford, Ms Williams and your form tutors.
- You will be organised into your form groups and then be taken to your form rooms by your form tutors to complete your induction day.

Astro Turf



Year 7 Form Tutors

Miss Perkins
7EPK

Miss Bater
7EBT



Ms Takhar
7ATA



Mrs
Hosgood
7JEH



Mr Davies
7MDA



Mr Doble
7RDO



Miss Evans
7CEV



Miss
Allford
7LAL



Mrs
Scott-Shaw
7RSS



Mr
Rothwell-
Scott
7TRS



Form Groups & Form Tutorials

- You will be grouped with approximately 30 pupils into your form group.
- You will attend form tutorial every morning from 8:35 am to 9:00 am.
- Your form tutor will register you, share important information with you and complete daily reflections with you.
- Your form tutor will also check on your progress, conduct and wellbeing with you; they will be one of the most important teachers in school for you, because they will be the only teacher that you see everyday!

The School Day at Bassaleg

8:35 am - 9:00 am	Form Tutorial/Assembly
9:00 am - 10:00 am	Period 1
10:00 am - 11:00 am	Period 2
11:00 am - 11:20 am	Break
11:20 am - 12:20 am	Period 3
12:20 am - 13:20 am	Period 4
13:20 am - 2:00 pm	Lunch
2:05 pm - 3:05 pm	Period 5

The School Curriculum at Bassaleg



English

Maths

Science

Welsh

PE

Music

Art

Engineering

Drama

Digital
Technology

History

Geography

RMP

Spanish

A Bassaleg School Timetable



Time Table Week 1

	Period 1	Period 2	Period 3	Period 4	Period 5
Monday	English	Science	Art	Maths	PE
Tuesday	Geography	Maths	RMP	Science	History
Wednesday	Spanish	Science	English	Music	Maths
Thursday	Drama	Maths	PE	History	Digital Technology
Friday	Welsh	English	RMP	English	Wellbeing

Time Table Week 2

	Period 1	Period 2	Period 3	Period 4	Period 5
Monday	Engineering	English	Art	Science	Maths
Tuesday	Nutrition	Welsh	Spanish	Geography	Music
Wednesday	Art	Science	Geography	Maths	Engineering
Thursday	Science	English	PE	RMP	Maths
Friday	English	Spanish	History	Welsh	RMP

Coming to Bassaleg: Getting Organised!



- You will be given a copy of your timetable on the first day: write it down, take a photograph of it, and stick it on your wall when you get home!
- Check your timetable as soon as you get home from school to check what lesson you have the next day, and pack your bag with the equipment that you need!
- All of your lessons will be in different rooms: it will be your responsibility to get to your lessons on time, correctly equipped.

Break & Lunch Time

- At break and lunchtime you will be able to relax with your friends in your designated year group zone.
- For Year 7, this is currently the school front field and the all weather area outside of the Forge building.
- You can access the school canteen at break and lunch times, buying good using our cashless dining card system.
- Break time lasts for 15 minutes and lunchtime lasts for 40 minutes.

Forge Canteen



Forge Hall



Forge Field



Forge Building



Senior Staff



Ms Lambe - Headteacher



Mr Batten - Assistant Headteacher

A Message from Ms Lambe



Transition Website



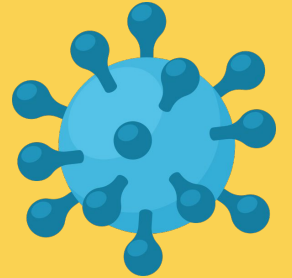
BASSALEG TRANSITION



Managing COVID19 at Bassaleg



- Like all schools, the last 14 months at Bassaleg have been affected by COVID19.
- Our pupils wear masks at all times when inside the school buildings.
- We have a one way system around the school which all pupils and staff must follow at all times.
- Our pupils are arranged into Year Group bubbles, meaning that when in school you can mix with people in your year group, but not with other year groups. We ask staff and pupils to socially distance, whenever possible, and complete weekly lateral flow tests.
- When working from home, our staff and pupils use Google classroom.



Life at Bassaleg



YEAR 7 VISIT TO LONDON



BASSALEG AWARDS EVENING

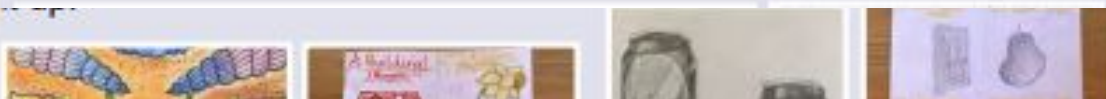


ENGLISH DEPARTMENT





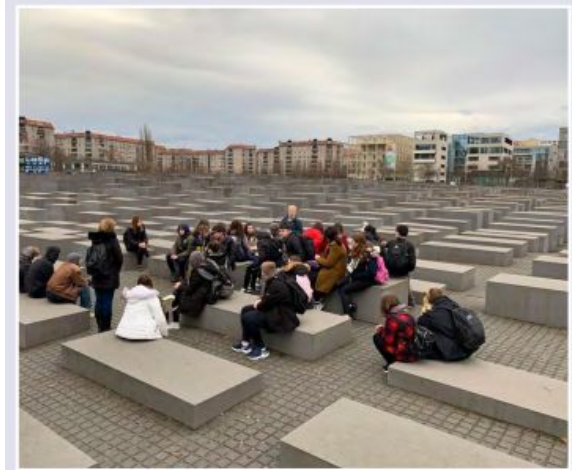
ART DEPARTMENT



BASSALEG SCHOOL COUNCIL



HISTORY DEPARTMENT



GEOGRAPHY DEPARTMENT



GCSE CATERING



SCIENCE DEPARTMENT



BASSALEG FUNRAISING



YSGOL
BASSALEG
SCHOOL



PE DEPARTMENT



BEAUTY & THE BEAST



Goodbye Class of 2021!



**We will look
forward to
seeing you in
September!**

